

19
BARN OWL BOXES, 15 BEE
HOTELS AND 3 SAND
MARTIN NEST BANKS
INCREASING WILDLIFE
ACCOMMODATION
CHOICES

5.3 KM
OF LANDSCAPE FEATURES SUCH
AS FENCING, REED CUTTING OR
WATERCOURSE MANAGEMENT TO
IMPROVE NATURAL HERITAGE
AND BIODIVERSITY

1117
VOLUNTEERS
ENGAGED IN ACTIVITIES

6421
TREES
PLANTED
5277
WILD PLANTS
PROPAGATED
AND PLANTED

960 PEOPLE
BENEFITTING FROM
96 HERITAGE TRAINING
AND SKILLS WORKSHOPS

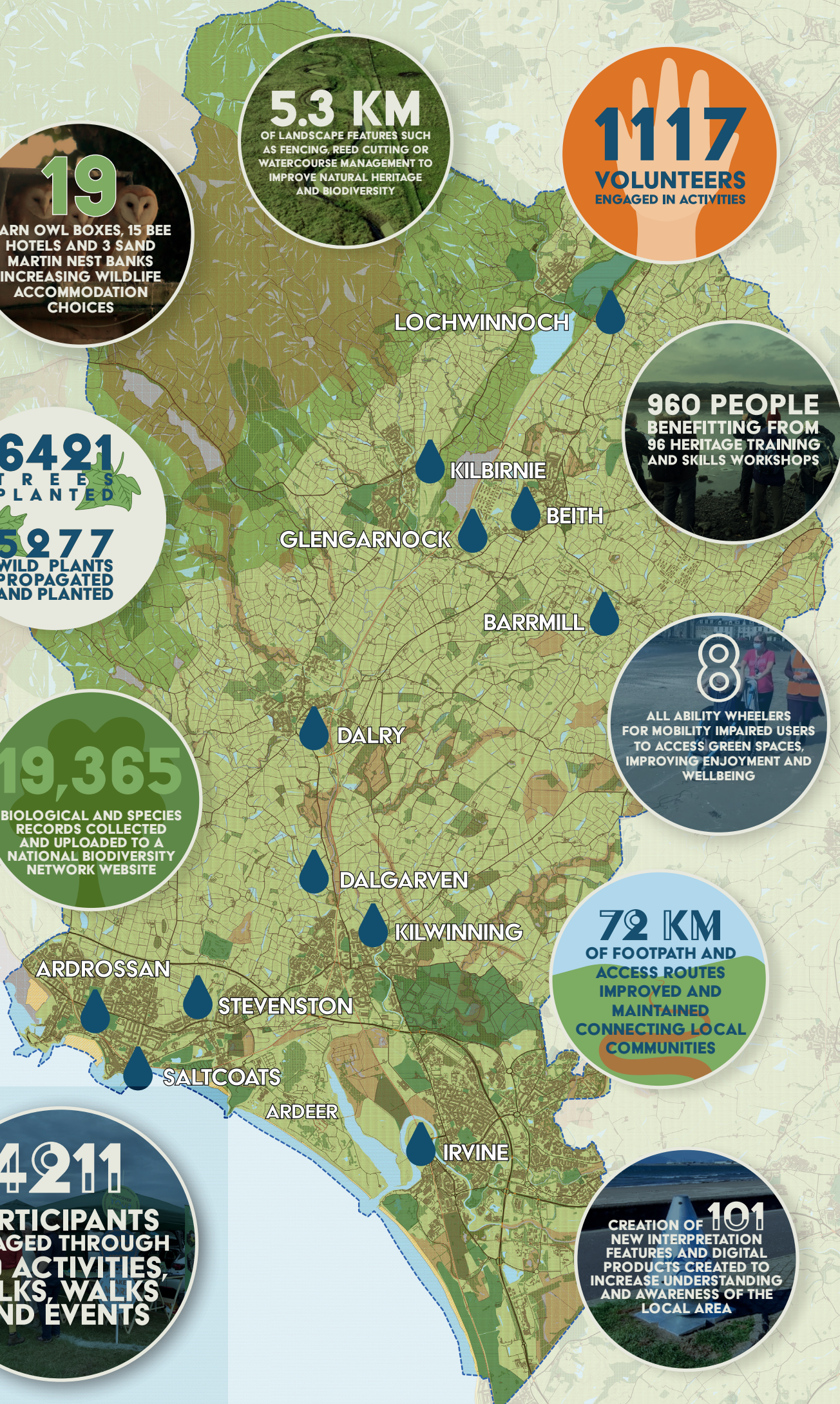
19,365
BIOLOGICAL AND SPECIES
RECORDS COLLECTED
AND UPLOADED TO A
NATIONAL BIODIVERSITY
NETWORK WEBSITE

8
ALL ABILITY WHEELERS
FOR MOBILITY IMPAIRED USERS
TO ACCESS GREEN SPACES,
IMPROVING ENJOYMENT AND
WELLBEING

72 KM
OF FOOTPATH AND
ACCESS ROUTES
IMPROVED AND
MAINTAINED
CONNECTING LOCAL
COMMUNITIES

4211
PARTICIPANTS
ENGAGED THROUGH
799 ACTIVITIES,
TALKS, WALKS
AND EVENTS

CREATION OF **101**
NEW INTERPRETATION
FEATURES AND DIGITAL
PRODUCTS CREATED TO
INCREASE UNDERSTANDING
AND AWARENESS OF THE
LOCAL AREA





Garnock Connections

A landscape with the River Garnock at its heart, forming a connection from the Muirshiel hills to Irvine Bay, around which the natural and historical wealth of the valley is enhanced, revealed, and made accessible for the benefit of communities now and in the future.

Habitat Network

Enhanced the habitat and species networks to diversify the landscape and encourage free movement of species to help them adapt to climate change and more sustainably manage water and soils.

Knowledge Network

Helped communities better understand and value the wealth of heritage of the Garnock Connections landscape through partnership working to protect and promote both natural and cultural heritage.

Access Network

Strengthened connections between people and place. Active involvement within the landscape through themed walks, trails app and provision of training and improved infrastructure were catalysts to encourage exploration and making the landscape more accessible.

Community Network

Helped people develop stronger connections with their heritage, of the rich history and wealth of wildlife, through skills development and engaging new interests that benefit their health and wellbeing and engage in the conservation and enhancement of their heritage to inspire them to safeguard it.

The Garnock Connections Landscape Partnership delivered 28 varied yet undoubtedly linked projects across 4 themes between 2018 and 2023 with support from the National Lottery's National Lottery Heritage Fund with a total budget of £2.1 million. The six organisations that made up the partnership invested and helped raise £700k in match funding to support the projects across the 360km² of the project area.

We arrive at the end of what became a 5-year project with plenty to celebrate. We started off with a suite of 25 projects but ended up successfully delivering and achieving outputs for 28 different projects across the landscape. We would like to thank everyone involved, funders, partners, projects leads and the local people who signed up to the scheme in their various guises to help achieve everything we did.

None of these fantastic projects would have happened had it not been for the imagination, trust and patience of everyone involved. Local people volunteered their time, engaged with opportunities created by the project, and all thanks to the support of the National Lottery through the National Lottery Heritage Fund making it all possible.

We hope you share the feeling of pride in what has been achieved and join us in looking forward to what happens next, to see just how resilient the people and places of the landscape are. To see exactly what we achieved in numbers other than money, take a look overleaf to see what it all means for the natural and cultural heritage of the Garnock Connections area.

Contact: Garnock.Connections@rspb.org.uk

Websites: www.garnockconnections.org.uk and www.placesthatweknow.org

